



# FULL PRESENTATION CIVIL & MEP CONTRACTING

## Company Profile

---

[www.fullpresentation.net](http://www.fullpresentation.net)





# Content

---



## About Us

- Who We are
- Mission, Vision & Values
- Organization Chart



## Services



## Quality



## Why us



## Social Responsibility



## Project





# About Us

---

## ■ Who We Are

FULL PRESENTATION CIVIL & MEP CONTRACTING is a leading general construction company specializing in Civil and MEP (Mechanical, Electrical & Plumbing) works. We are committed to delivering high-quality finishes and ensuring that every project meets the highest standards of craftsmanship and durability.

We provide comprehensive services in civil construction, MEP works, interior design, finishing, renovation, and maintenance. Our expertise spans a wide range of projects, including commercial buildings, warehouses, showrooms, educational institutions, government buildings, and residential properties. With a skilled team of technicians, engineers, and professionals, we offer exceptional workmanship at competitive prices. In a short period, we have built a strong reputation for excellence, consistently exceeding client expectations across various sectors.





# About Us

---

## ■ Mission

To cover the market demands by offering comprehensive solutions across multiple sectors, including Civil, MEP, and other engineering services. We deliver high-quality results with a focus on on-time completion and a tailored approach to each project, ensuring that we address the unique needs of every client

## ■ Vision

To be a leading construction company in the market, recognized for delivering excellence in quality and on-time, value-added projects. We aim to be the most preferred choice for customers by consistently providing the highest level of service and superior craftsmanship in every project we undertake







# About Us

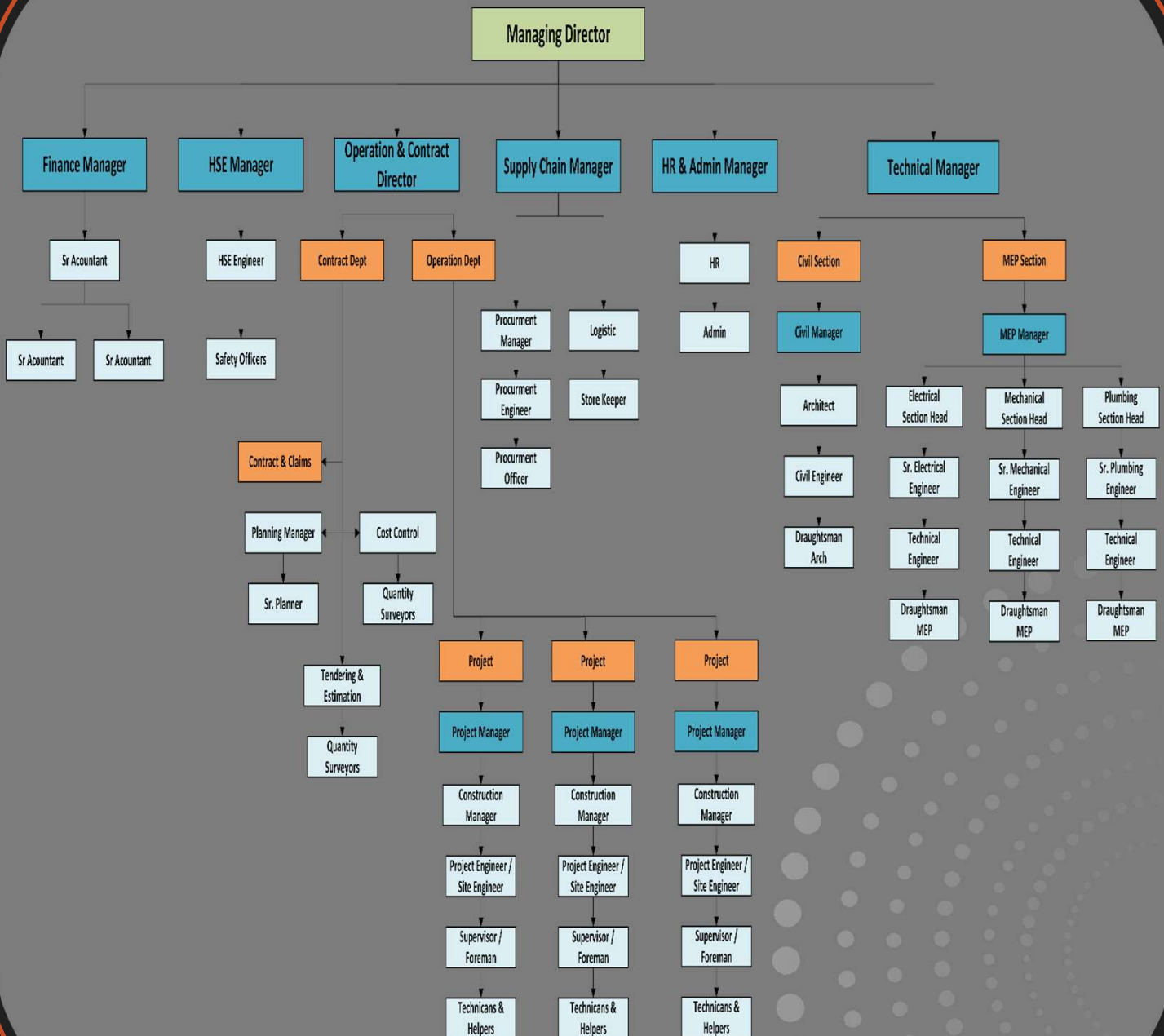
---

## ■ Values

- Ⓢ **Transparency:** Ensuring clear and open communication.
- Ⓢ **Safety:** Prioritizing a safe working environment.
- Ⓢ **Teamwork:** Encouraging collaboration to achieve shared goals.
- Ⓢ **Time Management:** Delivering projects on schedule.
- Ⓢ **Employees:** Valuing and investing in our workforce.
- Ⓢ **Social Responsibility:** Commit to sustainability and community impact



# Organization Chart





# Services

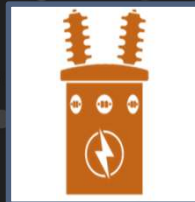
---



CONTRACTING



Mechanical



Electrical



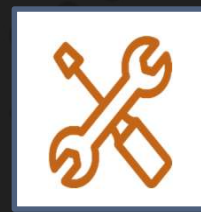
Plumbing



Civil



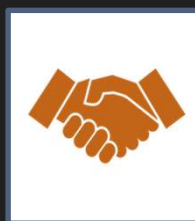
Pool & Water  
Features



Fit-Out



Maintenance



Installation monitoring,  
commissioning and  
handover



# Contracting

---

We provide project planning, leading, executing, supervising and inspecting the work.

- Ⓢ **Planning:** Define goals, schedule, resources, and budget.
- Ⓢ **Procurement:** Identify and source equipment/materials.
- Ⓢ **Risk Management:** Identify risks, create contingency plans.
- Ⓢ **Subcontractors:** Hire, train, and monitor subcontractors.
- Ⓢ **Communication:** Establish a plan, hold meetings, clarify roles.







# MEP

Our dedicated MEP team provides comprehensive and innovative solutions, covering design, procurement, installation, commissioning, and maintenance of advanced mechanical, electrical, and plumbing systems. We are committed to delivering exceptional quality, efficiency, and reliability across projects of all sizes



## Mechanical

- Ⓛ HVAC Systems
- Ⓛ Ventilation
- Ⓛ Exhaust Systems
- Ⓛ Cooling & Heating Systems
- Ⓛ Fire Protection Systems



## Electrical

- Ⓛ Power Distribution
- Ⓛ Lighting Systems
- Ⓛ Fire Alarm Systems
- Ⓛ Security Systems
- Ⓛ Backup Power Systems
- Ⓛ Solar Energy
- Ⓛ Electrical Infra
- Ⓛ BMS



## Plumbing

- Ⓛ Water Supply Systems
- Ⓛ Drainage Systems
- Ⓛ Sanitary Fixtures
- Ⓛ Gas Systems
- Ⓛ Stormwater Systems



# MEP

## ■ Plumbing Works

- Ⓢ HDPE, MULTI LAYER, CAST IRON, DUCTILE IRON PIPE
- Ⓢ UPVC, CPVC, PVC, COPPER, PPR PIPES
- Ⓢ SANITARY FIXTURES
- Ⓢ WATER HEATER, CALORIFIER, WATER SOFTENER
- Ⓢ PUMPS & CONTROLLERS
- Ⓢ GULLIES, DRAIN & VALVES
- Ⓢ GREASE & OIL INTERCEPTORS
- Ⓢ KITCHEN & LAUNDRY EQUIPMENT



## ■ HVAC Works

- Ⓢ CHILLER, AHU, PACKAGE UNITS
- Ⓢ VRV, CRAC UNIT, FCU
- Ⓢ DUCT, VAV, FD, GRILL & DIFFUSER
- Ⓢ CHW PUMPS AND CONTROLLERS
- Ⓢ CHW PIPING , INSULATION AND CLADDING
- Ⓢ EXHAUST, EXTRACT, SPF, JET FANS
- Ⓢ PLATED HEAT EXCHAGER





# MEP

## ■ Fire Fighting & Protection

- Ⓛ FIRE FIGHTING PIPING
- Ⓛ FHC, ZCV, ACV, FIRE EXTINGUISHERS,
- Ⓛ SPRINKLERS FIRE HYDRANT, BREECHING INLET
- Ⓛ CLEAN – AGENT FIRE SUPPRESSION SYSTEMS



## ■ Electrical Works

- Ⓛ MV SWITCH GEAR, RMU , TRANSFORMERS
- Ⓛ PACKAGE SUBSTATIONS & UNIT SUBSTATIONS
- Ⓛ MDB, SMDB, MCC, DB
- Ⓛ BUSBARS, RISERS & CONTAINMENT
- Ⓛ UPS & CENTRAL BATTERY SYSTEM (CBS)
- Ⓛ GENERATOR & ATS
- Ⓛ MV, LV CABLE LAYING AND TERMINATION
- Ⓛ POWER MANAGEMENT SYSTEMS
- Ⓛ SECURITY SYSTEM (CCTV & ACS)
- Ⓛ FIRE DETECTION AND ALARM SYSTEMS
- Ⓛ EARTHING NETWORKS & LIGHTNING PROTECTION



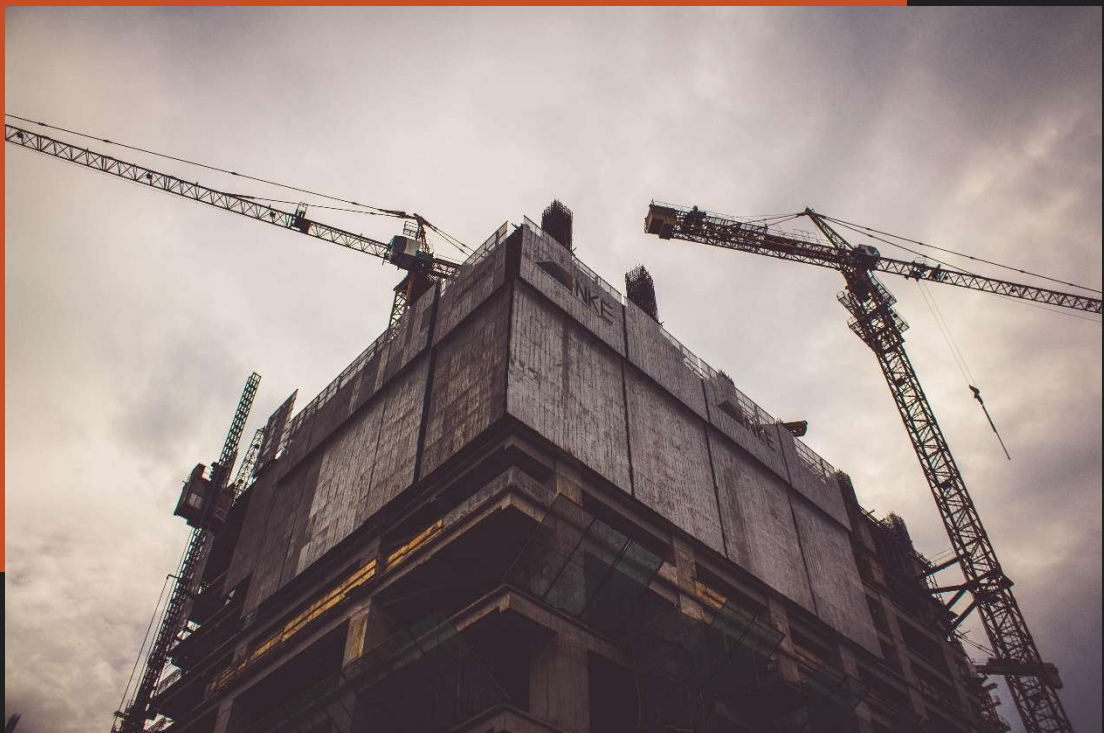


# Civil

---

## ■ Civil Work

- ④ **SITE PREPARATION:** Clearing and leveling land for construction.
- ④ **EXCAVATION:** Digging for foundations, trenches, or utilities.
- ④ **FOUNDATION WORK:** Pouring and setting foundations for buildings.
- ④ **CONCRETE WORKS:** Pouring and finishing concrete for structures.
- ④ **MASONRY:** Brick, stone, or blockwork for walls and structures.
- ④ **LANDSCAPING:** Designing and shaping outdoor spaces.
- ④ **STRUCTURAL WORK:** Erecting steel, concrete, and wooden frameworks.
- ④ **WATERPROOFING:** Apply treatments to prevent water leakage.







# Pool & Water Feature

## ■ Pool Work

- FP IN-GROUND POOLS
- FP ABOVE-GROUND POOLS
- FP INFINITY POOLS
- FP PLUNGE POOLS



## ■ Water Feature Work

- FP WATERFALLS
- FP FOUNTAINS
- FP WATER WALLS
- FP RAIN CURTAINS







## Fit Out

### ■ Civil Fit-out Work

- Ⓟ **PARTITIONING:** Install internal walls or dividers.
- Ⓟ **FLOORING:** Lay down carpet, tiles, or wood.
- Ⓟ **CEILING WORK:** Install suspended or false ceilings.
- Ⓟ **DOORS AND WINDOWS:** Fit interior doors and windows.
- Ⓟ **FINISHES:** Apply paint, wall cladding & surface finishes.
- Ⓟ **INTERIOR LAYOUT:** Plan space and allocate rooms



### ■ MEP Fit-out Work

- Ⓟ **HVAC:** Install climate control systems.
- Ⓟ **LIGHTING:** Set up lighting fixtures.
- Ⓟ **POWER:** Install electrical panels and outlets.
- Ⓟ **FIRE ALARMS:** Install smoke detectors and alarms.
- Ⓟ **SECURITY:** Set up CCTV and access control.
- Ⓟ **PLUMBING:** Install sanitary ware





# Maintenance

As part of our commitment to excellence, we offer our clients preventive as well as corrective maintenance Contracts through regular visits and systematic management approach. Our Services covers both Civil works as well as MEP and it is designed for small as well as big projects.

- Ⓢ PREVENTIVE & CORRECTIVE MAINTENANCE
- Ⓢ PREDICTIVE MAINTENANCE
- Ⓢ CONDITION-BASED MAINTENANCE
- Ⓢ EMERGENCY MAINTENANCE
- Ⓢ ROUTINE MAINTENANCE
- Ⓢ STRUCTURAL MAINTENANCE
- Ⓢ EXTERIOR MAINTENANCE
- Ⓢ INTERIOR MAINTENANCE
- Ⓢ MECHANICAL & ELECTRICAL MAINTENANCE
- Ⓢ LANDSCAPE & GROUNDS MAINTENANCE
- Ⓢ RENOVATION & UPGRADES WORKS





# Installation Monitoring, Testing & Commissioning and Handover

---

## ■ Installation Monitoring

- Ⓢ OVERSEE INSTALLATION.
  - Ⓢ ENSURE QUALITY AND SAFETY.
  - Ⓢ ADDRESS ISSUES.
- 

## ■ Testing & Commissioning

- Ⓢ TEST SYSTEM FUNCTIONALITY.
  - Ⓢ ENSURE OPERATIONAL STANDARDS.
  - Ⓢ TRAIN STAFF
- 

## ■ Handover

- Ⓢ TRANSFER DOCUMENTATION.
- Ⓢ CONDUCT FINAL INSPECTION.
- Ⓢ RESOLVE ISSUES AND ENSURE READINESS





## Quality





---

**Full Presentation Civil and MEP Contracting** is committed to quality as a core principle, preventing mistakes and ensuring flawless service delivery. Our focus on high standards, quality materials, and skilled professionals allows us to consistently meet client expectations and deliver reliable, defect-free results.



## Why Us

---

-  **RELIABLE RESULTS:** High-quality, on-time, defect-free work.
-  **CLIENT SATISFACTION:** Focused on meeting client needs perfectly.
-  **EXPERIENCED TEAM:** Skilled professionals in civil and MEP sectors.
-  **SUSTAINABLE PRACTICES:** Committed to eco-friendly solutions.







# Corporate Social Responsibility

At Full Presentation Civil and MEP Contracting, we are committed to Corporate Social Responsibility by promoting sustainable construction, reducing environmental impact, and using eco-friendly materials. We prioritize fair wages, safe working conditions, and skill development for our employees. We also actively support local community projects and social initiatives, aiming to improve the quality of life for our people and society while maintaining ethical and transparent business practices



Economical

CSR

Social

Environmental

Social

Training

Economical

Safety

Environmental

Environment Preservation



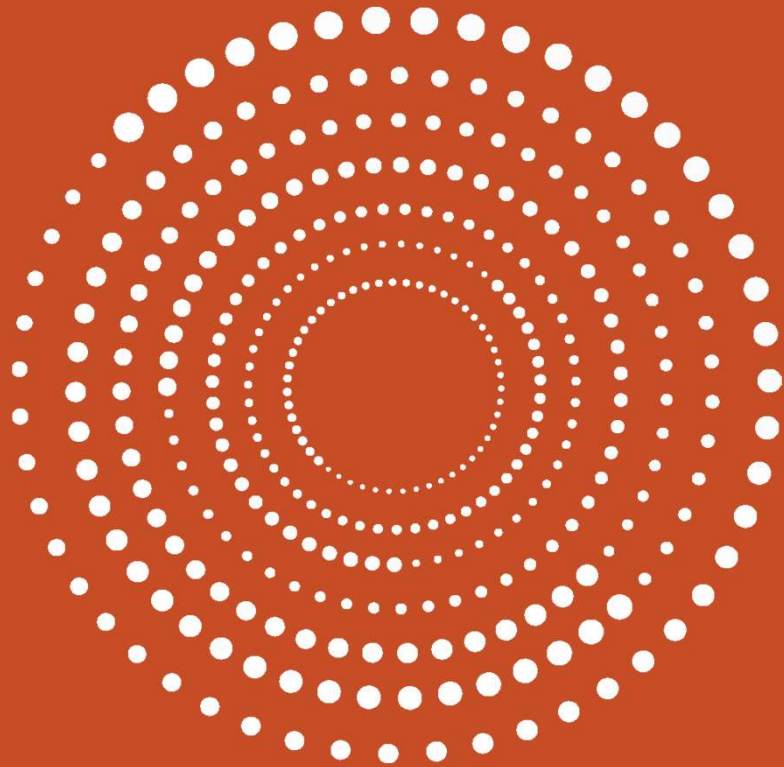


# Projects

Medical Village Project	
	<b>Location:</b> Riyadh <b>Client:</b> The Walk <b>Scope of Works:</b> MEP & Civil
Residential Villas	
	<b>Location:</b> Riyadh <b>Scope of Works:</b> MEP & Civil
Office Building Project	
	<b>Location:</b> Riyadh <b>Scope of Works:</b> MEP
Brand Showrooms	
	<b>Location:</b> Riyadh <b>Scope of Works:</b> MEP & Interior



# FULL PRESENTATION CIVIL & MEP CONTRACTING



E-mail: [fpest.2030@gmail.com](mailto:fpest.2030@gmail.com)

Website: [www.fullpresentation.net](http://www.fullpresentation.net)

Address: Kingdom of Saudi Arabia - Riyadh – Al  
Khalidiyah Dist- PO Box 7409 - Zip Code 12874,